

PARTS INCLUDED IN FULL MONITORING KIT

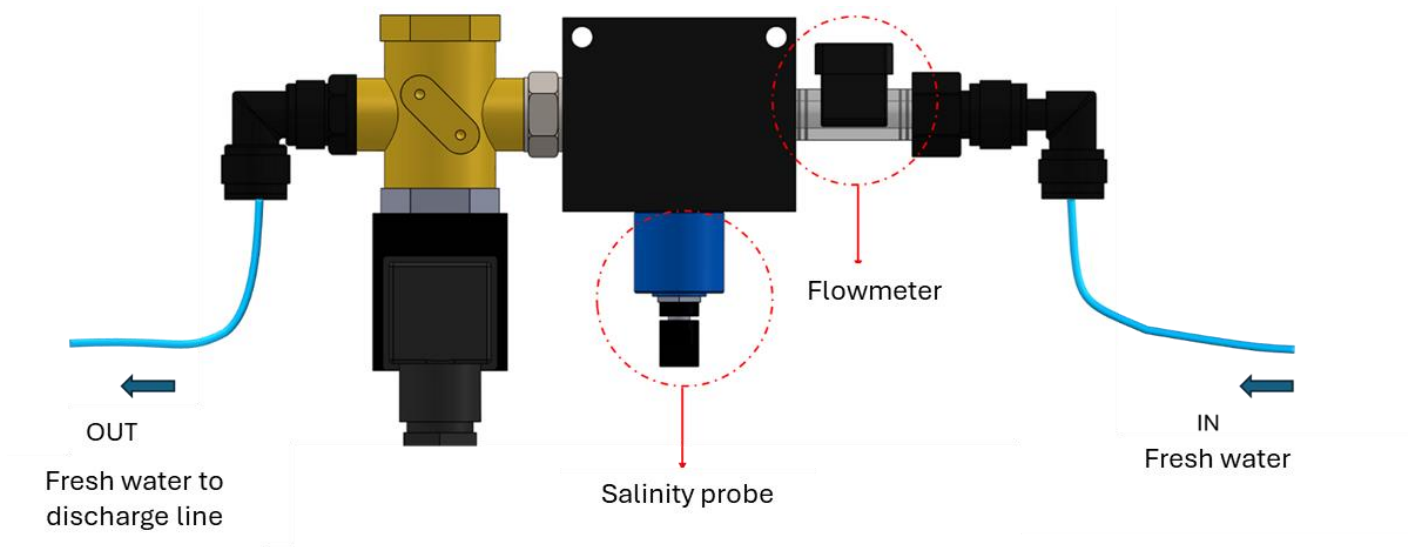
The full monitor kit is an option consisting of:

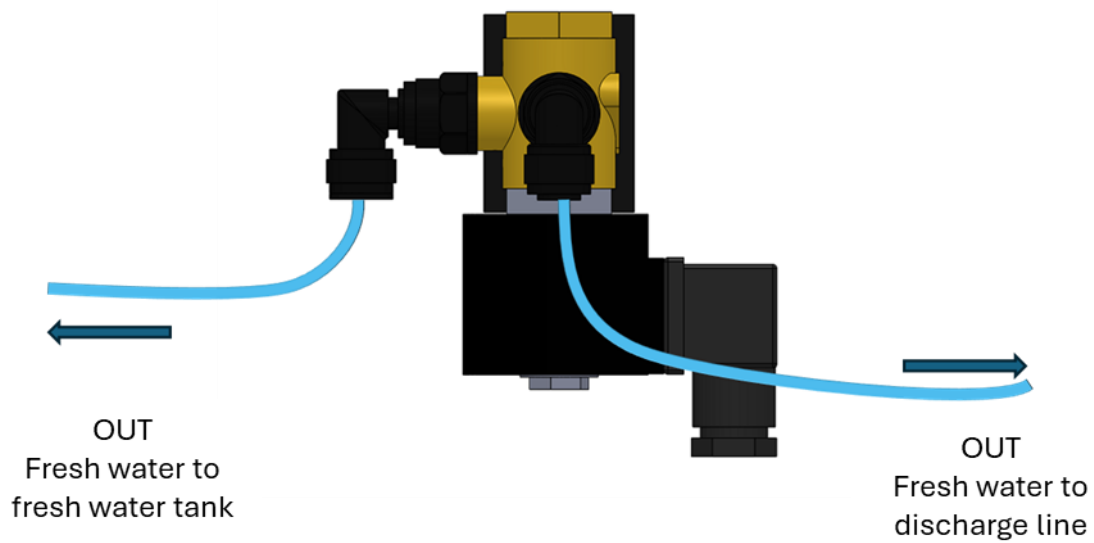
- Diverter valve with Salinity probe
- Pressure transducer
- Flow meter
- Exhaust manifold

Diverter valve with Salinity probe

The assembly consisting of salinity probe + flowmeter + diverter valve enables constant monitoring of the quality of water produced by the Watermark and the flow of fresh water produced.

The probe detects the salinity of the water and, depending on specific thresholds set in the electronic control, interacts with the diverter valve, which directs the incoming water flow to the tank if the quality is acceptable, otherwise it directs it to the on-board drain.





The possible Salinity ranges visible on the panel are:

- OK: the value is optimal, fresh water is directed toward the tank;
- MED: the value is acceptable, but not optimal, fresh water is directed toward the tank;
- BAD: the value is not acceptable, fresh water is directed toward the drain.

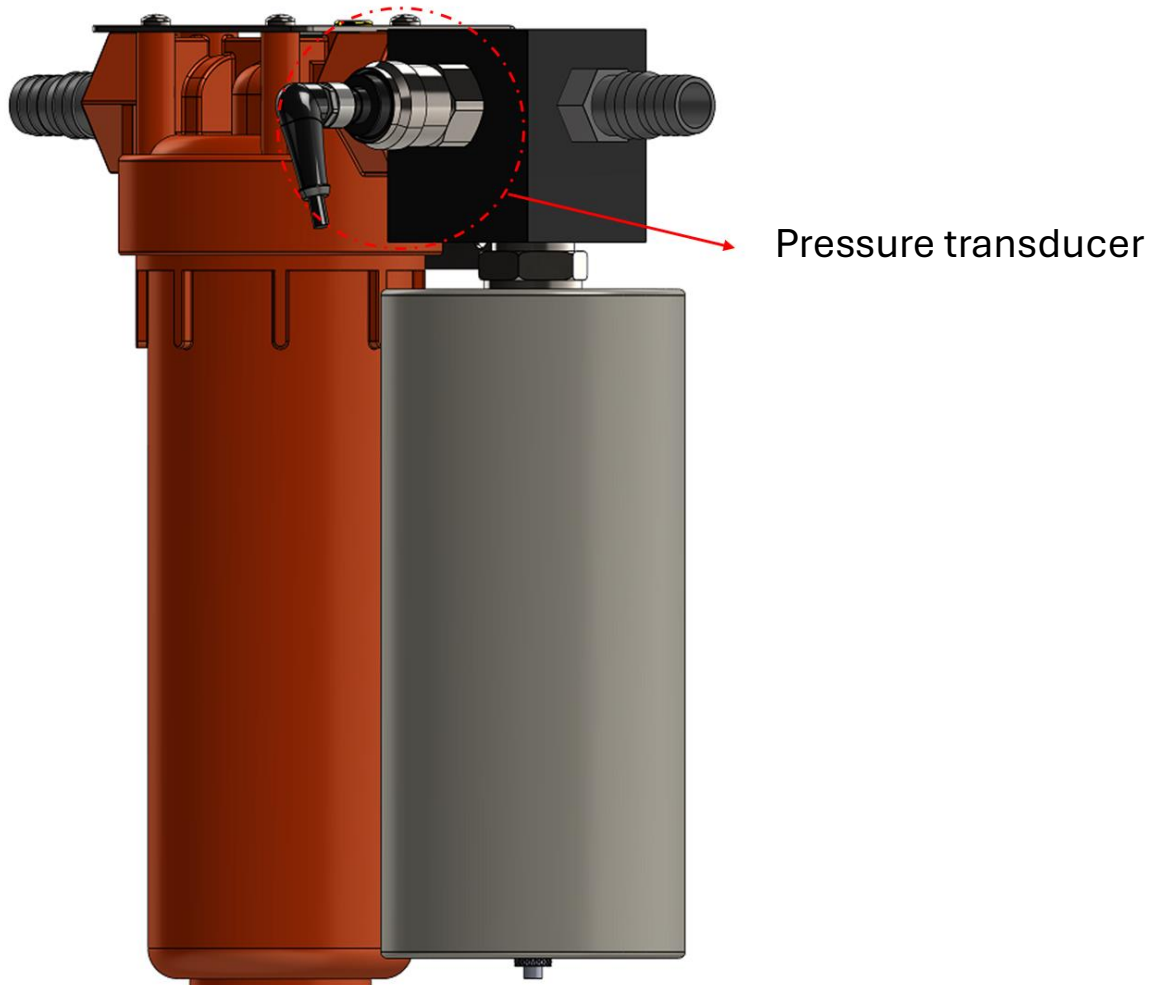
The Touch Panel shows the threshold values detected by the probe, in the specific Salinity section.

Flowmeter

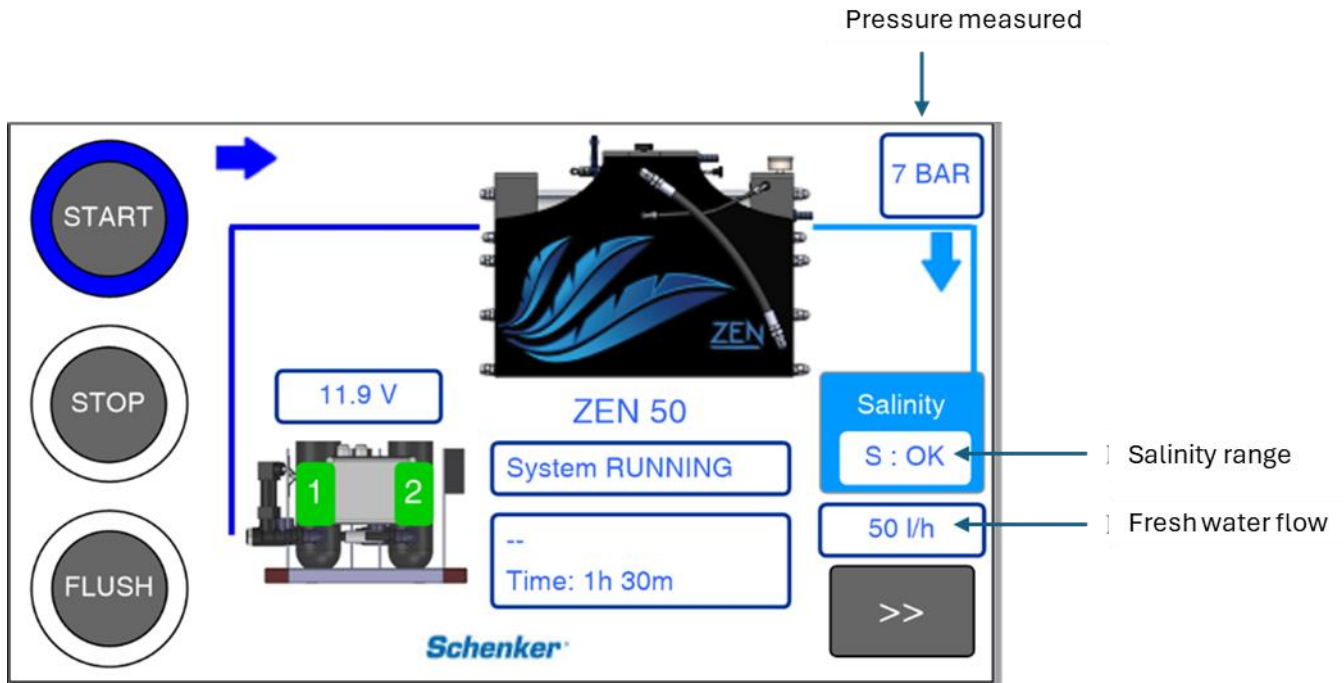
It measures the flow of fresh water produced by the Watermaker. It is a microturbine installed before the salinity probe + diverter valve assembly.

Pressure transducer

The pressure transducer constantly reads the pressure value of the water discharge from the pump. It is installed on the plug placed on the pressure accumulator. The measured pressure is converted into a current value and sent to the electronic control, which checks its acceptability and sends the value to the panel.



Below is an example of the values measured and shown by the Touch Panel.



Exhaust manifold

It conveys into one channel the saltwater discharge from the Watermaker and fresh water whose salinity is evaluated as BAD by the salinity probe and therefore directed to the discharge.

